



**IT'S ALL ABOUT
DENTAL EDUCATION**



gfdental.it





Born in Milan

Company GF Dental is engaged in **creation and realisation of didactic and practical stomatologic models of the highest quality.**

The line has appeared with desire to combine a wide experience and knowledge with more aggressive parity of the price and quality, being, currently, original modern Italian art in the field of stomatologic models, and offering the broadest spectrum of products, GF Dental, on demand, can design and realise any model.

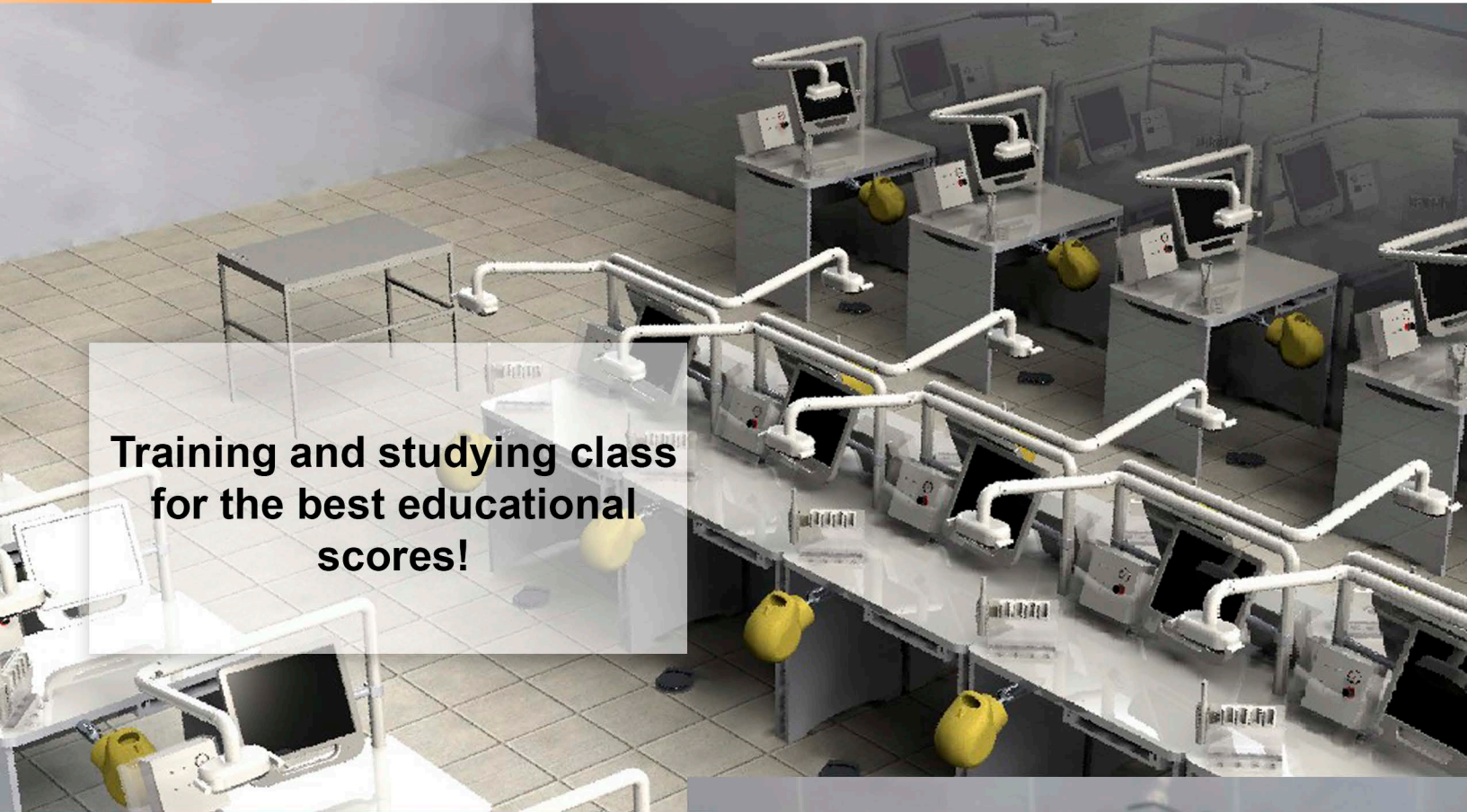
Professionalism, quality and experience do for today GF Dental by one of leaders in the area.

Sincerely,
Mr. Antonino Ficuciello

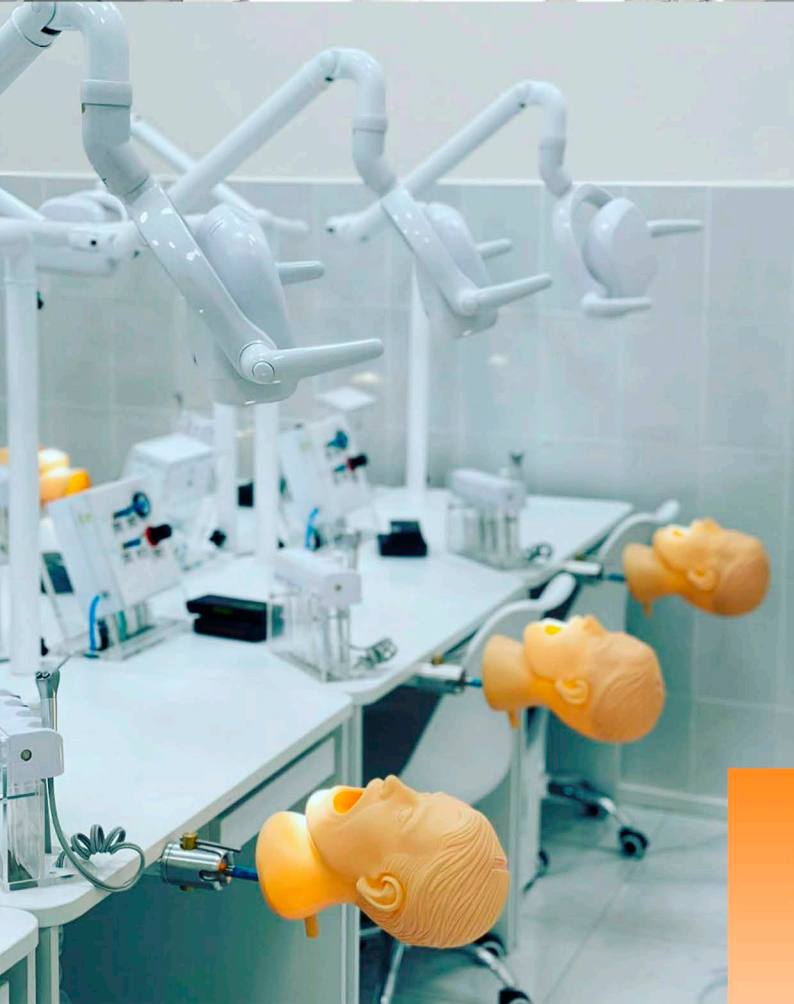


Complete solutions

Dental class



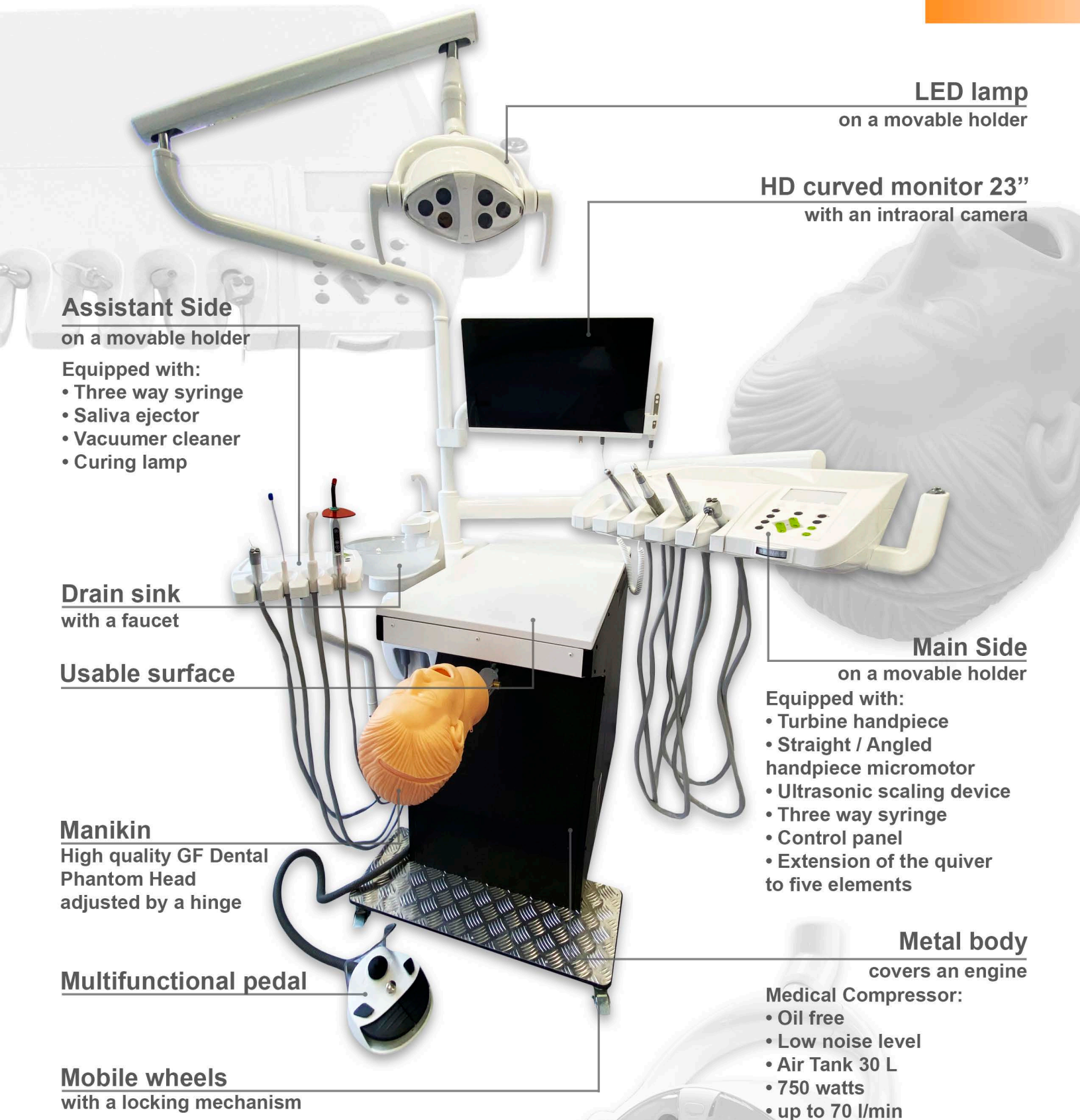
**Training and studying class
for the best educational
scores!**



We design - You teach!

for dental education

P/UNIT 2



LED lamp
on a movable holder

HD curved monitor 23''
with an intraoral camera

Assistant Side
on a movable holder

Equipped with:

- Three way syringe
- Saliva ejector
- Vacuum cleaner
- Curing lamp

Drain sink
with a faucet

Usable surface

Manikin
High quality GF Dental
Phantom Head
adjusted by a hinge

Multifunctional pedal

Mobile wheels
with a locking mechanism

Main Side
on a movable holder

Equipped with:

- Turbine handpiece
- Straight / Angled handpiece micromotor
- Ultrasonic scaling device
- Three way syringe
- Control panel
- Extension of the quiver to five elements

Metal body
covers an engine

Medical Compressor:

- Oil free
- Low noise level
- Air Tank 30 L
- 750 watts
- up to 70 l/min

Metal body:

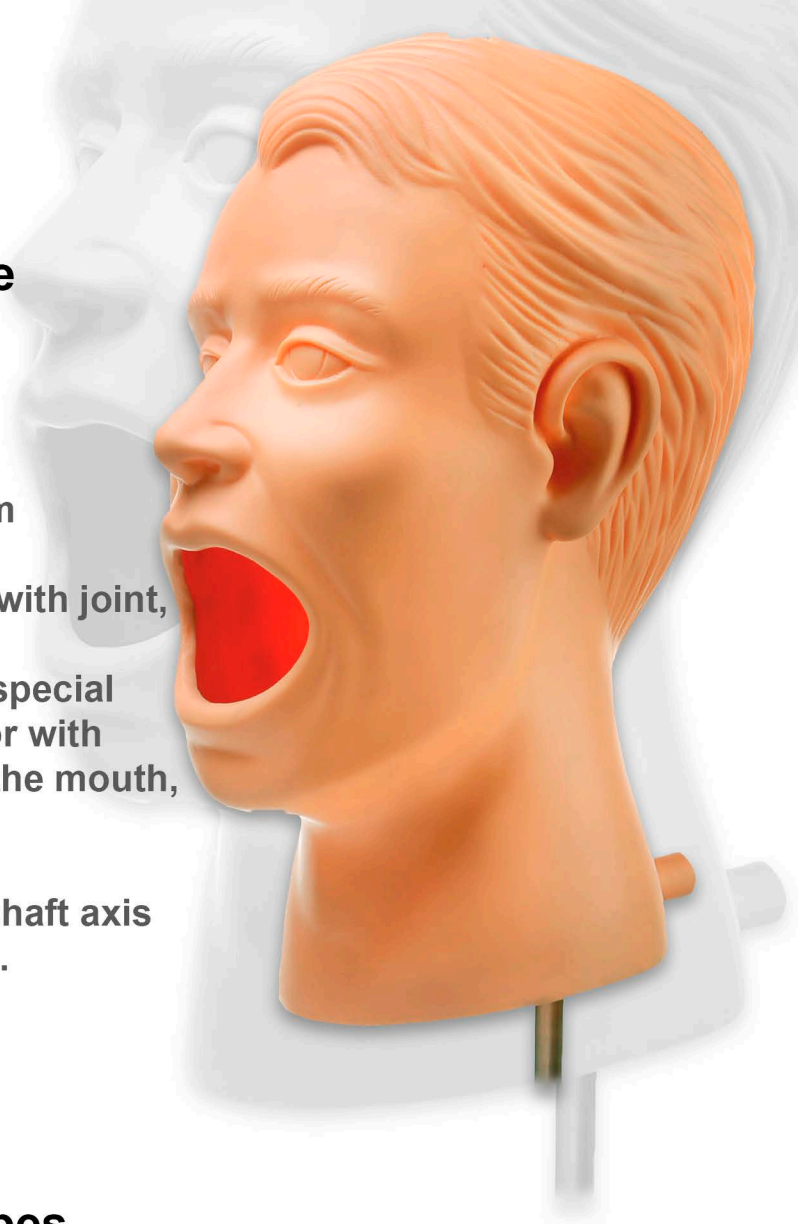
- May be treated with disinfectants
- Anti-vandal

Phantom head for practice PHT

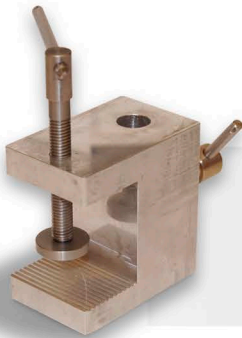
The GF Dental Phantom head for practice mounted on workbenches or fixed on a dental chair represents a complete system for dental practice in artificial mouth cavity. Complete dental manikin consisting of rod with joint, face mask that allows the use of water, which comes out of the manikin through a special drain in the back, skull cap, metal articulator with block in the maximum opening position of the mouth, silicone tongues.

In working position, it rotates 360 ° on the shaft axis and can be reclined 90 ° in the rest position.

All components are free from rust attacks.



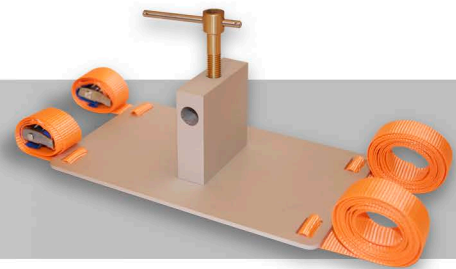
Fastenings of different types



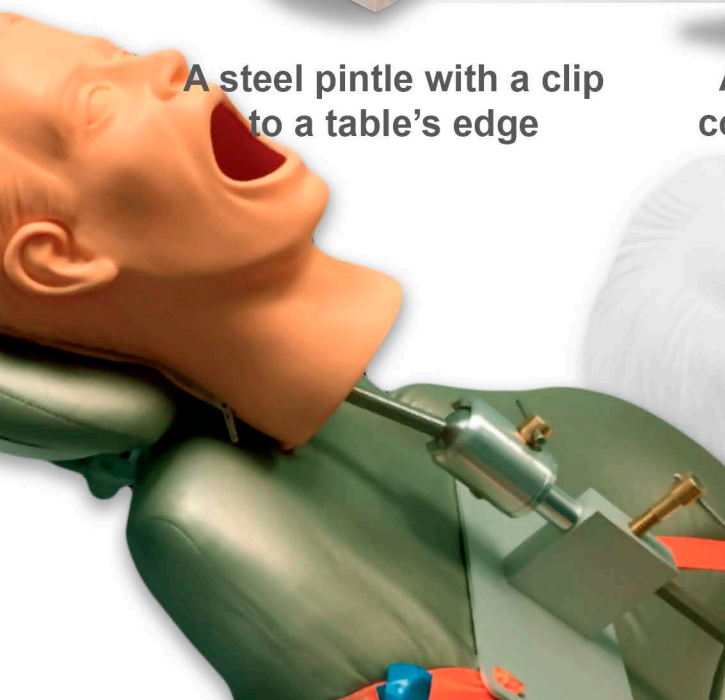
A steel pintle with a clip
to a table's edge



A flange
connection



A metal mount
to a chair



Child phantom head for practice
PHTC



Mouth cavity

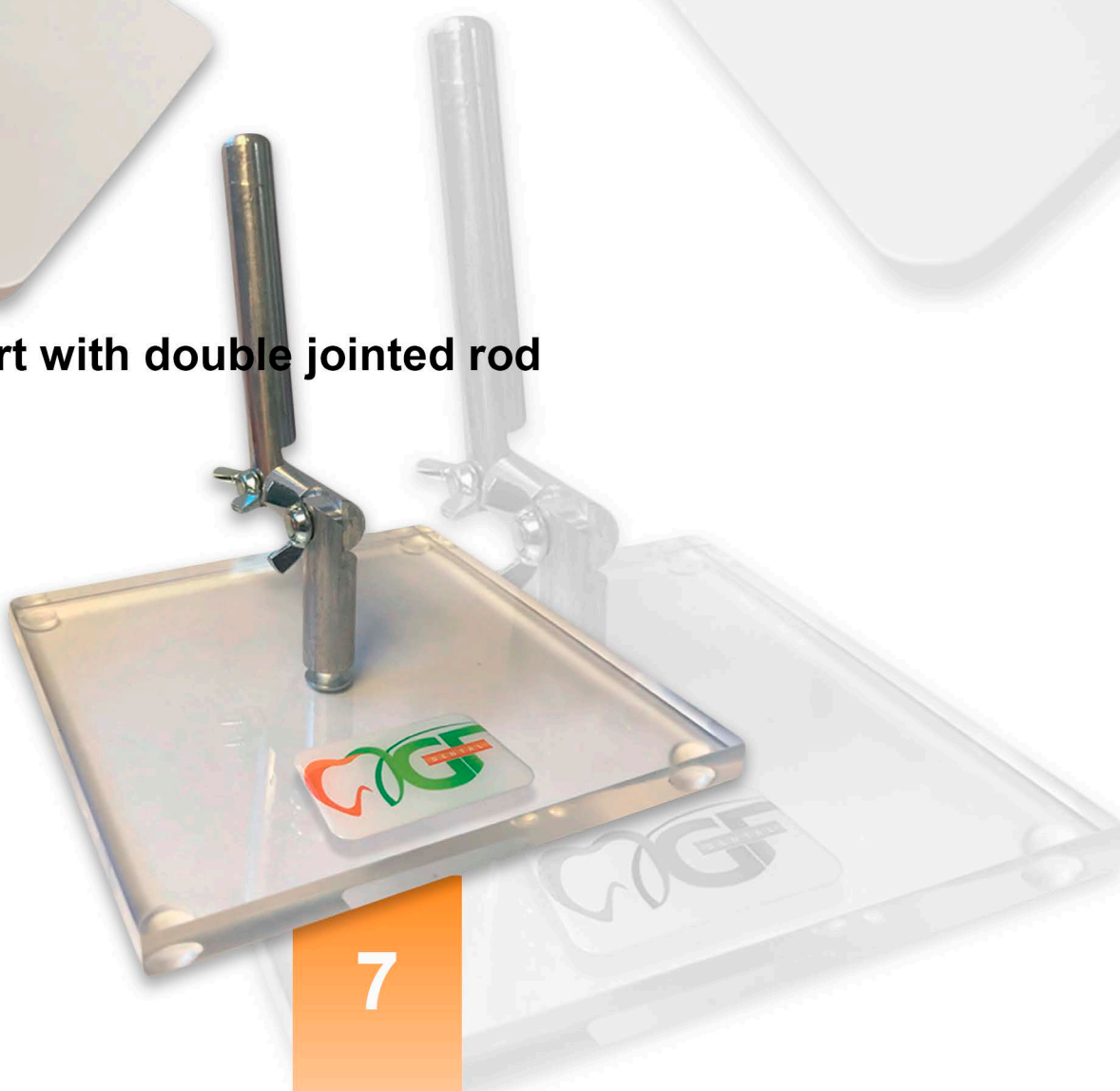
MF01

Mouth cavity in silicone with the possibility of being supplied with water drain, articulator in PVC and base in plaxyglass and double-jointed metal rod.



Support with double jointed rod

F01



Concervative models

E01

Model for conservative practice
with 32 screw-fixed ivory teeth and rigid gums gingivae



E02

Model 32 teeth with soft silicone gums and screw-fixed ivory teeth



E02/N

Model 28 teeth with soft silicone gums and screw-fixed ivory teeth



Periodontal models

E05

Periodontal model with fixed teeth, caries and gum by suture



E06

Periodontal model with screw-fixed teeth caries and gums by suture



E56

Periodontology model made with screw-fixed teeth in a hard synthetic material and gums in a special silicone rubber where it is possible to make cuts and gingival sutures with professional thread

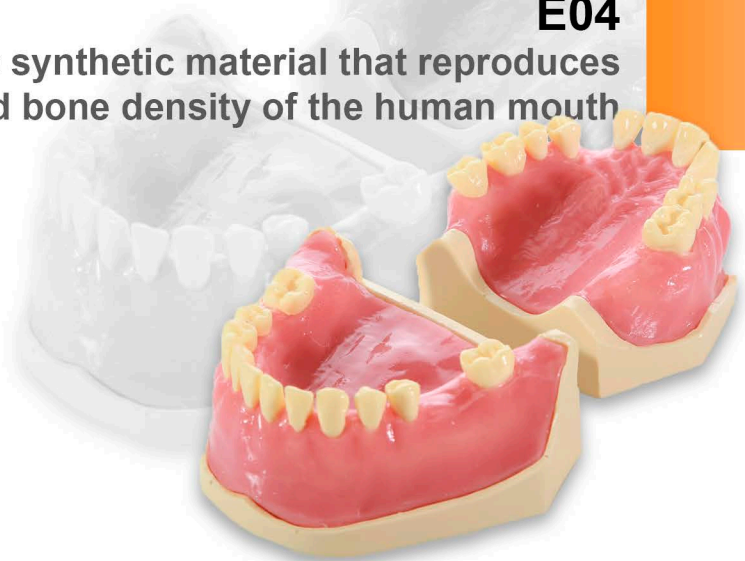
In some areas, the model represents strong periodontitis characteristics at the colletto level



Surgery models

E04

Model for surgical practice made of a synthetic material that reproduces the structure and bone density of the human mouth



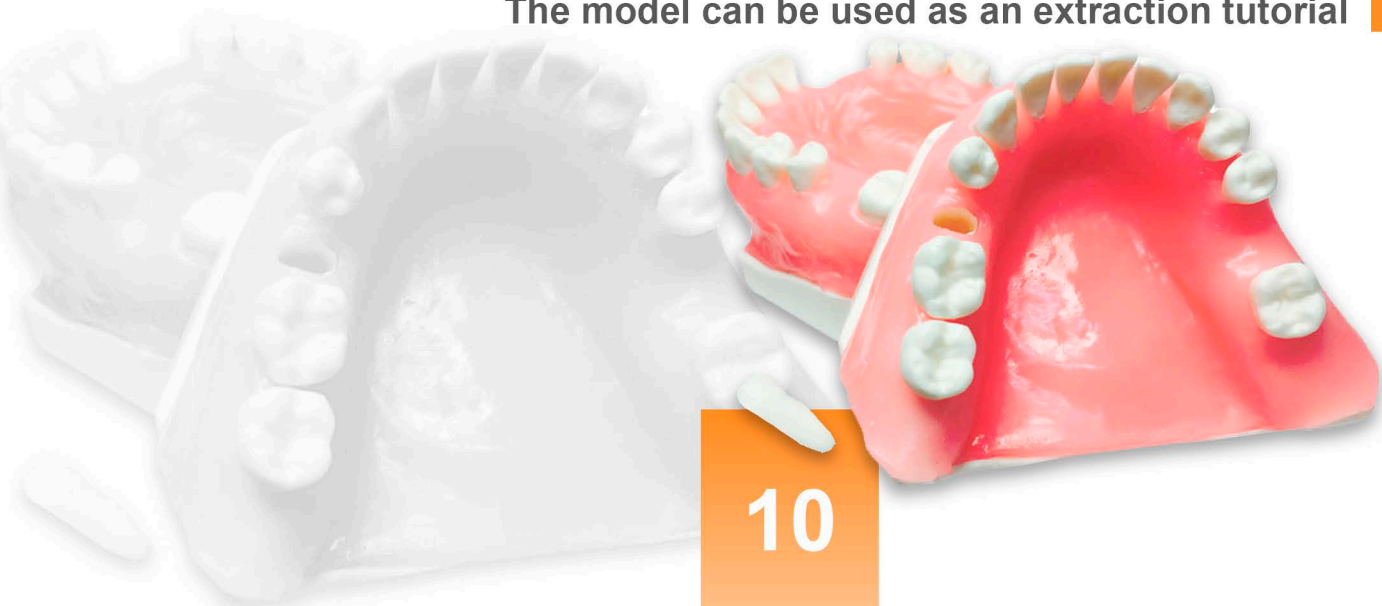
E34

Model for surgical practice in synthetic material with structure and density similar to bone and soft gum made of special silicone rubber where it is possible to make cuts and gingival sutures with professional thread



E35

The teeth can be extracted with normal tools (lever and pliers). The model can be used as an extraction tutorial



Endodontic models

E08

Model of 28 teeth for endodontics with bases in semi-rigid material to keep the teeth fixed in the alveolar cavities during exercises and soft silicone gums.



E08/TC

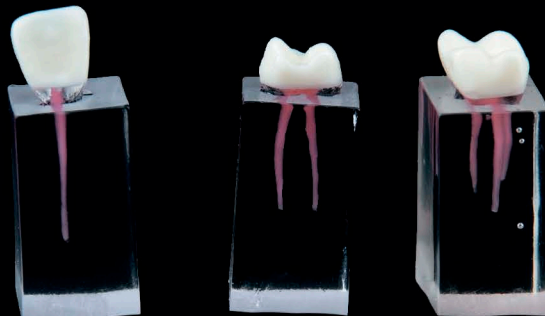
Replacement teeth with transparent roots, pulp chamber and canal for the E08 model



Parallelepipeds for endodontic exercises
Transparent, visible canals



E09/C



E08/C
Set of 3



E10/C

Anesthesia and orthodontic

E15

Composed of maxilla and mandible with an integrated electric circuit powered by a 12V battery with 2 green and red LEDs that emit a light signal to indicate the incorrect or correct position of the anesthesia



E40

Orthodontic simulator, 1st class occlusion with frontal group crowding, consisting of resin bases and special wax gums. Teeth made of "ivorine" material allow fixation with the normal method of use such as etching, composites and curing light. The teeth begin to move and rotate for the normal softening of the wax until the final result is achieved. The model can be reused.



Children's dentistry

EK1

Child model with 20 deciduous teeth and the first 4 definitive molars in "ivory" material that reproduce the natural hardness of the tooth screw-fixed with silicone gums for pedo / conservative practice



EK1/P

EK2

Child model with hard resin teeth for extraction practice.
Suturable gingiva.
Manikin / articulator attachment



Demonstration models



T01



T02

Drilling models

E81

Real anatomical mandible with thin resin crest that simulates natural bone density D2 for practicing implantology with normal drills or bone drills



E81/L

Mandible model in "synthetic bone" material density D2 for practicing implantology with normal or ossivorous drills



E21

Edentulous mandible model for implantology exercises in D2 density "synthetic bone" material and gingiva in special silicone rubber where it is possible to make cuts and gingival sutures with professional thread for implantology practice with normal or ossivorous drills



Surgery models

E36

Model that reproduces the anatomy of the jaw with the breasts for the exercise of zygomatic implants



E20

Edentulous model of jaw in synthetic material that reproduces the hardness of natural bone density D2 for sinus lift exercise. There is a very thin and flaky silicone Schneider membrane that simulates the serosa in the maxillary sinus cavity



E20/P

Edentulous model of jaw in synthetic material that reproduces the hardness of natural bone density D2 complete with suturable silicone gum for sinus lift exercise. There is a very thin and flaky silicone Schneider membrane that simulates the serosa in the maxillary sinus cavity



Surgery models

E23

Jaw model with teeth in the front group and free saddles in the posterior in synthetic material that reproduces the hardness of natural bone density D2 complete with suturable silicone gum for sinus lift exercise



There is a very thin and flaky silicone Schneider membrane that simulates the serosa in the maxillary sinus cavity

E37

Jaw model in synthetic material that reproduces the hardness of natural bone density D2 post extraction practice



E37/G

Jaw model in synthetic material that reproduces the hardness of natural bone density D2 post extraction practice



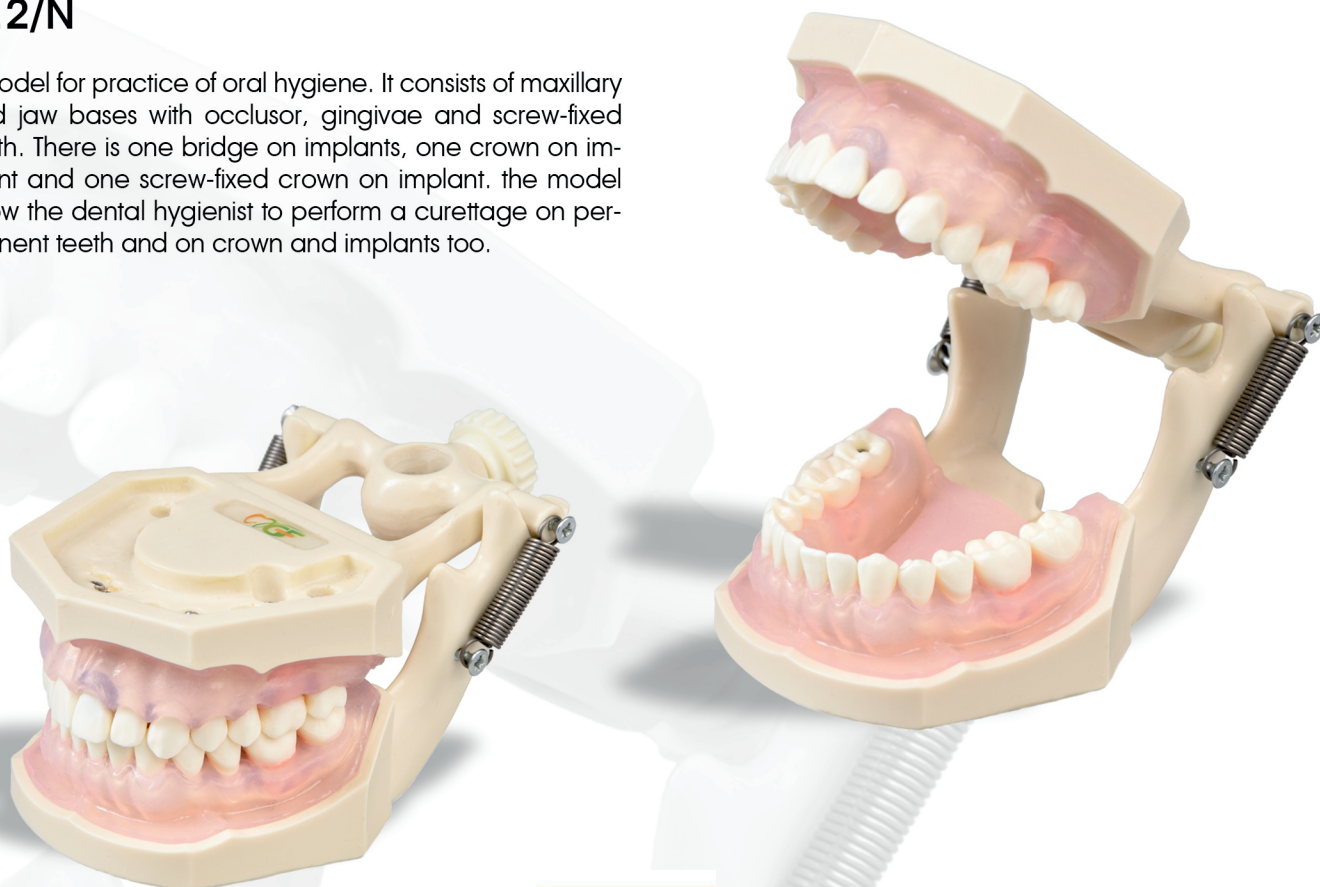
E11

Model for practice of oral hygiene equipped with transparent pink gum gingivae showing paradonthopathies with screw-fixed teeth.



E12/N

Model for practice of oral hygiene. It consists of maxillary and jaw bases with occlusor, gingivae and screw-fixed teeth. There is one bridge on implants, one crown on implant and one screw-fixed crown on implant. the model allow the dental hygienist to perform a curettage on permanent teeth and on crown and implants too.





Via G.Zuretti, 54
20125 Milano, Italy
+39 02 3943 8583
+39 32 99 814 342
gfdental.it@gmail.com
www.gfdental.it



SAVE OUR CONTACT



VISIT US IN WEB